



Stannah

**escalators
&
moving
walkways**

engineered by

ANLEV

for the riding comfort of
passengers worldwide

Stannah

escalators & moving walkways

Stannah has recently added escalators and moving walkways to its portfolio which already includes: passenger lifts, access lifts, goods lifts and stairlifts; major lift refurbishments; and maintenance of all types of lifting equipment from all manufacturers. This new development will strengthen its position and build on an already excellent reputation acquired over 150 years of manufacturing, installation and maintenance.

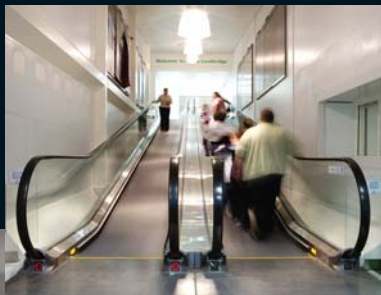
Stannah has maintained and repaired escalators and moving walkways for many years and through recommendation from satisfied customers is delighted to have been appointed UK distributors for Anlev, Hong Kong - one of the world's fastest growing specialist manufacturers of escalators and moving walkways.

Stannah and Anlev share a remarkable synergy; both are wholly owned independent manufacturers and leaders in their specialist markets. Anlev demands the same quality and attention to detail in after-sales care from its partners worldwide as they put into their design and manufacture; Stannah more than satisfied Anlev's stringent technical and commercial requirements.

With a nationwide network of service branches and outstanding engineers Stannah is able to ensure your installation is completed on time and within budget. We are happy to help you through the whole process of your installation, liaising with architects, contractors, clients and consulting engineers on your behalf. We provide the highest level of service to all our customers.

Stannah is Quality Assured to ISO9001:2000. This guarantees you are dealing with a reliable company which has been externally assessed for their quality procedures.

Our nationwide after-sales service is fast, reliable, efficient and ready to assist day or night. We offer a 24 hour, 365 days a year call out capability.



engineered by ANLEV

for the riding comfort of passengers worldwide

"We are delighted to be associated with Anlev and are particularly excited by the excellent compatibility of the two companies. We are of a very similar size and structure to Anlev; we share common core values of product quality, safety and excellent customer service delivered by a highly trained and dedicated workforce."

Jon Stannah, Managing Director

Escalators and moving walkways distributed by Stannah in the UK are manufactured by Anlev in China to the highest specifications:

Comfort for passengers, combined with low operating costs

Exceptional riding comfort is achieved through products designed on the principles of minimal friction, vibration and noise. Escalators and moving walkways offer a superbly smooth ride for passengers whilst achieving exceptional durability and outstanding energy efficiency to benefit the building operators.

Advanced control system

Each product has an advanced ADV microprocessor control system that closely monitors and controls the escalator/moving walkway operation through:

- Dot matrix LCD or LED display
- MP3 voice announcement
- Automatic start/stop control with passenger detection and time schedule operation
- RS485 communication link for interface to BMS or remote monitoring system

Built-in quality

Every product is manufactured by Anlev using the highest quality materials and components to the most exacting standards, ensuring the Company maintains its position at the forefront of technology and innovation in escalator and moving walkways. The equipment fulfils the safety requirements of the EC Directive, carries the CE Mark and complies with BS EN 115:1995. The Company is ISO9001:2000 accredited.

escalators

The A2 family of escalators is designed and manufactured to cover all commercial, industrial and public transport applications. With a wide range of finishes and materials available for each type, it provides a flexible selection of escalator arrangements that will match and enhance any setting, interior or exterior.



A2C

Glass panel balustrade, natural anodised aluminium handrail guide frame with optional lighting.



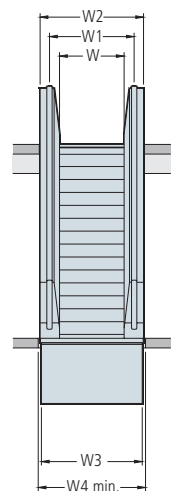
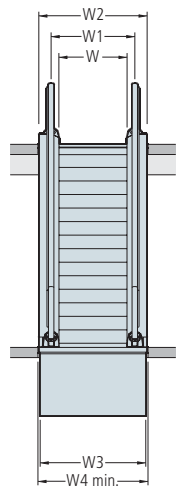
A2S

Glass panel balustrade, with extra slim handrail guide frame, the A2S perfectly matches elegant environments such as shopping malls and commercial buildings.



A2T

Stainless steel panel balustrade, the A2T's robust construction makes it best suited to public transport systems.



The A2 family of escalators offers freedom of choice in a wide range of materials and finishes, providing a flexible selection of arrangements that perfectly match and complement their surroundings.

Part

Step

Comb

Landing plate

Skirting

Decking

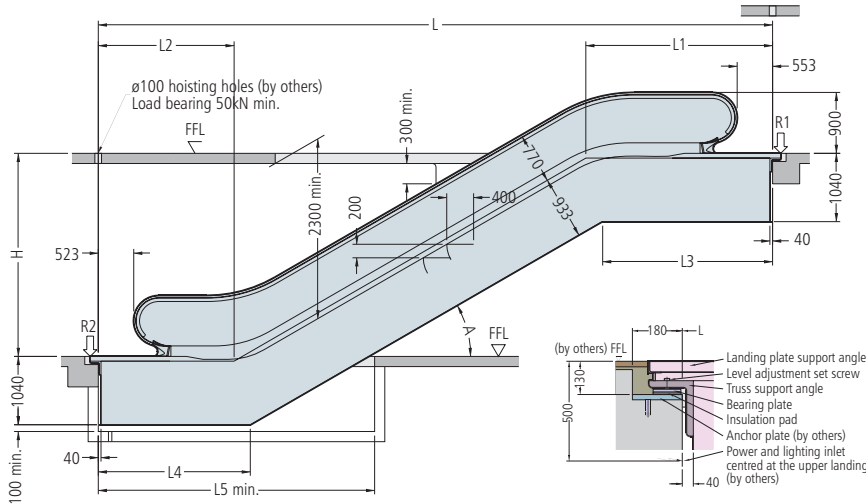
Cladding

Balustrade panel

Handrail

engineering data

A2C & A2S



Model	A2C-30D	A2C-30T	A2C-35D	A2C-35T
Angle - A	30	30	35	35
Flat step	2	3	2	3
Rise - H	3000-7600	3000-7600	3000-6000	3000-6000
L	1.732H + 4765	1.732H + 5745	1.428H + 4905	1.428 + 5885
L1	2759	3249	2790	3280
L2	2006	2496	2115	2605
L3	2573	3063	2549	3039
L4	2192	2682	2356	2846
L5	4080	4570	3910	4400

W	Model	A2C-30D	A2C-30T	A2C-35D	A2C-35T
1000	Weight (kN)	0.008H+46	0.008H+50	0.007H+46	0.007H+50
	R1 (kN) ²	0.0083H+39	0.0083H+43	0.0071H+39	0.0071H+43
	R2 (kN) ²	0.0083H+31	0.0083H+35	0.0071H+31	0.0071H+35
800	Weight (kN)	0.008H+38	0.008H+42	0.007H+37	0.007H+41
	R1 (kN) ²	0.0075H+32	0.0075H+36	0.0064H+32	0.0064H+36
	R2 (kN) ²	0.0075H+24	0.0075H+28	0.0064H+24	0.0064H+28
600	Weight (kN)	0.008H+34	0.008H+38	0.007H+33	0.007H+37
	R1 (kN) ²	0.0066H+28	0.0066H+31	0.0056H+28	0.0056H+31
	R2 (kN) ²	0.0066H+20	0.0066H+23	0.0056H+20	0.0056H+23

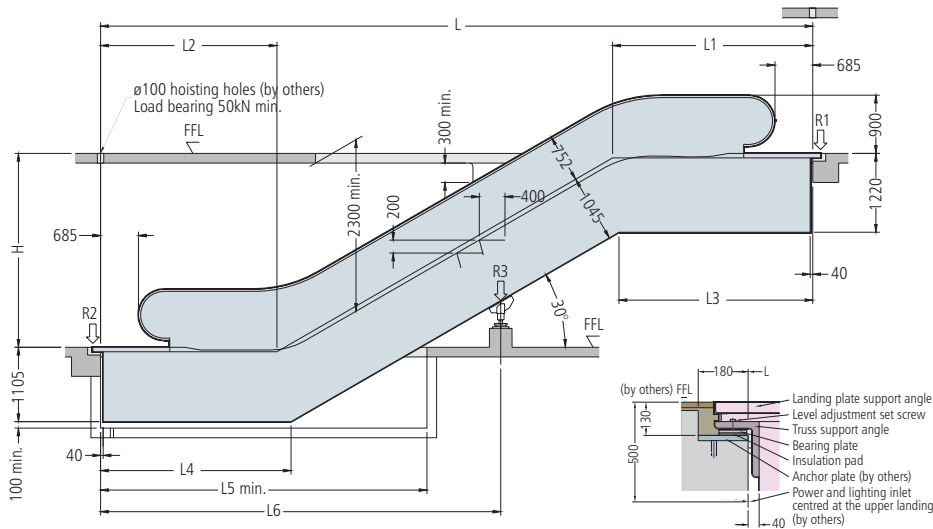
Note:

*1) All dimensions in mm

*2) For H < 6000, an intermediate support may be required - please consult Stannah.

Step width - W	1000	800	600
W1	1235	1035	835
W2	1600	1400	1200
W3	1560	1360	1160
W4	1620	1420	1220

A2T



Model	A2T-30T
Angle - A	30
Flat step	3
Rise - H	3000-9000
L	1.732H + 5745
L1	3249
L2	2496
L3	3150
L4	2793
L5	4818

W	Model	A2T-30T
1000	Weight (kN)	0.01H+54
	R1 (kN) ²	0.0093H+45
	R2 (kN) ²	0.0093H+37
800	Weight (kN)	0.008H+59
	R1 (kN) ²	0.0075H+45
	R2 (kN) ²	0.0075H+37
600	Weight (kN)	0.008H+52
	R1 (kN) ²	0.0066H+39
	R2 (kN) ²	0.0066H+31

Step width - W	1000	800	600
W1	1260	1060	860
W2	1600	1400	1200
W3	1560	1360	1160
W4	1620	1420	1220

Note:

*1) All dimensions in mm

*2) For H < 6000, an intermediate support may be required - please consult Stannah.

Standard material and finish

Silver painted die cast aluminium alloy, yellow synthetic resin demarcation line

Natural colour aluminium alloy

Stainless steel with black etched grooves

Hairline stainless steel

Hairline finished stainless steel

Clear, 10mm tempered safety glass

Black, synthetic rubber, continuous vulcanised, with steel cord reinforcement and nylon cord gliding surface

Optional

Black painted grooves

Yellow powder coated

Aluminium alloy with black grooves

Stainless steel with customised etched pattern and logo

Black or clear anti-friction coating

Choice of various combination of stainless steel or brass with coloured, hairline or mirror finish

Choice of various materials and finish eg stainless steel, glass, marble etc.

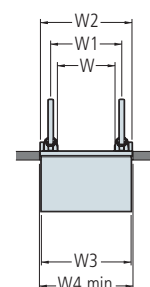
Choice of 4 other standard colours

Choice of 11 other standard colours

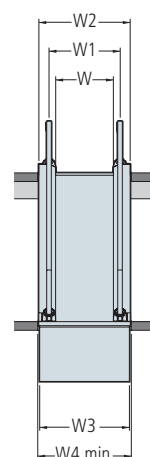
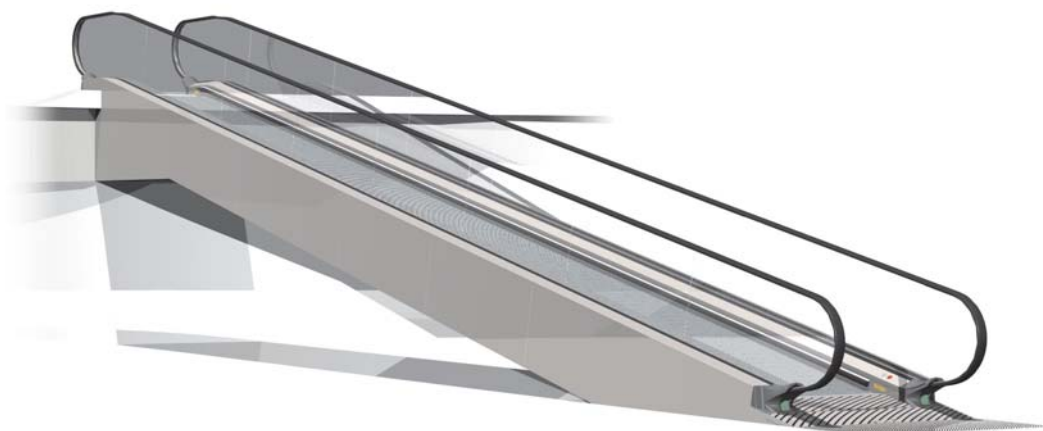
moving walkways

The ST range of moving walkways form integrated horizontal and vertical transport systems that will enhance both the appearance and operation of any building or infrastructure development. A wide range of finishes and materials are available, providing a flexible selection that will match and enhance any setting.

ST - horizontal



ST - inclined

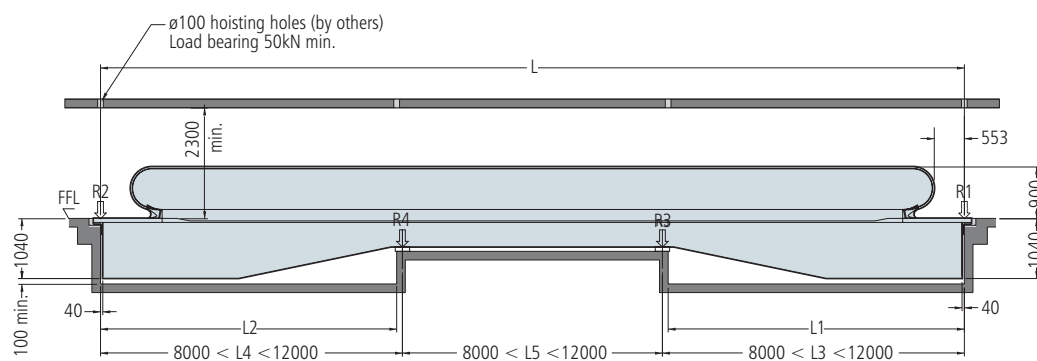


The ST range of moving walkways offers freedom of choice in a wide range of materials and finishes, providing a flexible selection of arrangements that perfectly match and complement their surroundings.

Part	Standard material and finish
Pallet	Silver painted die cast aluminium alloy
Comb	Natural colour aluminium alloy
Landing plate	Stainless steel with black etched grooves
Skirting	Hairline stainless steel
Decking	Hairline finished stainless steel
Cladding	
Balustrade panel	Clear, 10mm tempered safety glass
Handrail	Black, synthetic rubber, continuous vulcanised, with steel cord reinforcement and nylon cord gliding surface

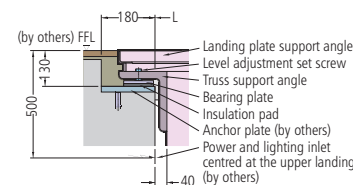
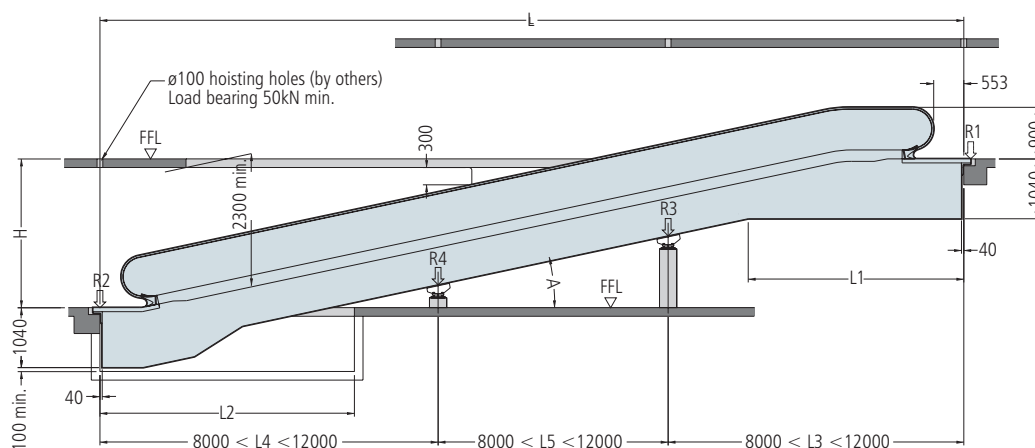
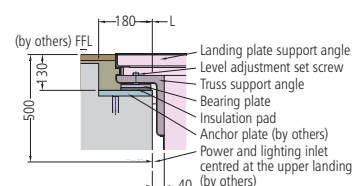
engineering data

Pallet width - W	1400	1200	1000	800
W1	1635	1435	1235	1035
W2	1992	1792	1592	1392
W3	1960	1760	1560	1360
W4	2040	1840	1640	1440



Model	ST-000
L	134000 max
L1	5500 max
L2	5500 max

Note:
 *1) All dimensions in mm
 *2) Please consult Stannah for number of intermediate support and reaction loads



Note:
 *1) All dimensions in mm
 *2) Please consult Stannah for number of intermediate support and reaction loads

Model	ST-1040	ST-1044	ST-1140	ST-1144	ST-1240	ST-1244
Angle-A	10	10	11	11	12	12
Rise-H	1500-10340	1500-10340	1500-10580	1500-10580	1500-10780	1500-10780
L	5.06713H+2951	5.6713H+4436	5.1446H+2977	5.1446+4488	4.7046H+3003	4.7046+4541
L1	3934	3934	3790	3789	3672	3672
L2	5750	7260	5300	6830	4900	6480

Pallet width - W	1000	800
W1	1235	1035
W2	1592	1392
W3	1560	1360
W4	1640	1440

Optional

- Black painted grooves
- Yellow powder coated
- Aluminium alloy with black grooves
- Stainless steel with customised etched pattern and logo
- Black or clear anti-friction coating
- Choice of various combination of stainless steel or brass with coloured, hairline or mirror finish
- Choice of various materials and finish eg stainless steel, glass, marble etc.
- Choice of 4 other standard colours
- Choice of 11 other standard colours





Stannah Escalators & Moving Walkways
Unit 27-28 Morgan Way, Bowthorpe Industrial Estate,
Norwich NR5 9JJ
Tel: 01603 748021 Fax: 01603 743097
Email: escalators@stannah.co.uk
www.stannahescalators.co.uk