

@lgood



Lever handles and knobs

1. signature collection



sembra @ allgood

The main design principle of Sembla is the central node; the component which makes the physical connection to the door.

Around the node a choice of pulls, grips and tips may be selected, allowing the specifier the opportunity to choose the detail that most suits their aesthetic requirement.

The Sembla range is available in various finishes, providing a wide choice of aesthetic options. To select the product in the finish that you require, just add the finish prefix to the part number of the item.

If you would like to substitute the standard grip and tip to one of the alternative, please add the grip suffix to the end of the product number.



ST
Satin Stainless Steel.



SP
Polished Stainless Steel.



KT
Knurled Satin Stainless Steel grip and tip.



LT
Light Wood grip and tip.
Sourced from a FSC (Forest Stewardship Council) sustainable approved source, Light Wood grips are made from beech timber.



MA
Modric Anodised Aluminium.



DT
Dark Wood grip and tip.
Sourced from a FSC (Forest Stewardship Council) sustainable approved source, Dark Wood grips are made from beech timber with a rich mahogany stain.



ST
Soft Touch grip and tip.
Soft Touch Sembla is a polyurethane based black coating with excellent durability. The finish gives the visual effect of low gloss with a soft feel, providing a tactile gripping experience.
Alternative colours available on request.



LE
Leather grip and tip.
Leather Sembla can provide an interior with a continuation of a soft furnishing theme and provide a warm and luxurious grip.

Sembla @ allgood

The unique feature of Allgood lever handles is the Quadaxial rose assembly. This provides a corrosion resistant, maintenance free solution.

All Sembla lever sets have independent test evidence to BS EN 1906, classification

47-1140U

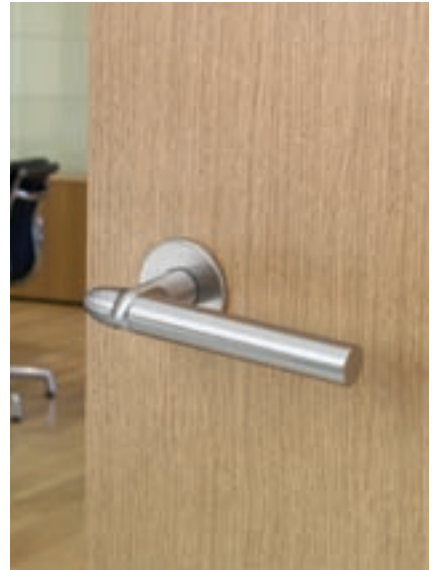
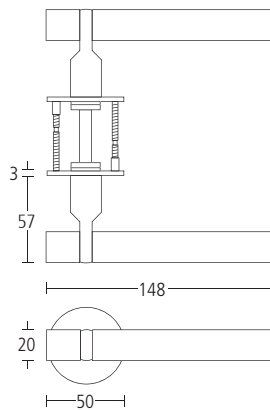


3623

Sembla lever handles with straight grip and drum tips on concealed Quadaxial fixing roses.

Finishes: ST • SP • MA

Grips: KT • LT • DT • ST • LE



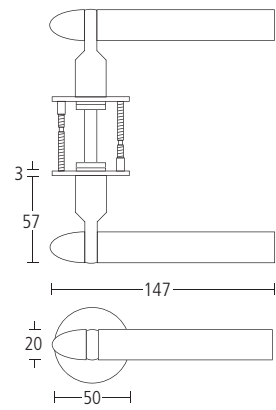
3643

Sembla lever handles with straight grip and bullet tips on concealed Quadaxial fixing roses.

Finishes: ST • SP • MA

Grips: KT • LT • DT • ST • LE

Note: Bullet tips supplied plain



Lever handles

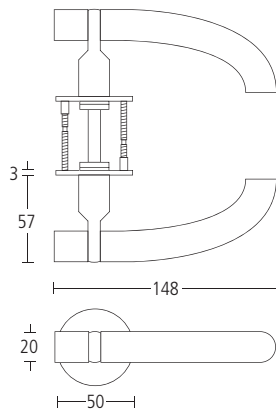


3626

Sembla lever handles with crescent grip and drum tips on concealed Quadaxial fixing roses.

Finishes: ST • SP • MA

Grips: ST



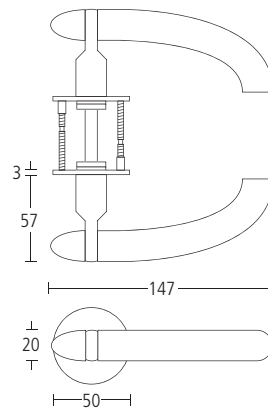
3646

Sembla lever handles with crescent grip and bullet tips on concealed Quadaxial fixing roses.

Finishes: ST • SP • MA

Grips: LT • DT • ST • LE

Note: Bullet tips supplied plain



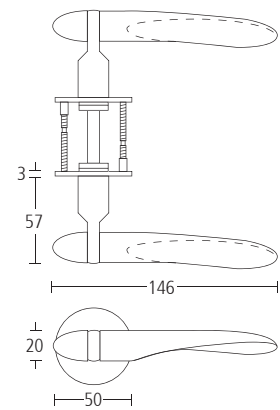
3640

Sembla lever handles with propeller grip and bullet tips on concealed Quadaxial fixing roses.

Finishes: ST • SP

Grips: LT • DT • ST • LE

Note: Bullet tips supplied plain





1628

Sembla pull handle with drum tips and bolt through fixings. 400mm centres.

Finishes: ST • SP • MA

Grips: KT • LT • DT • ST • LE

1628BB

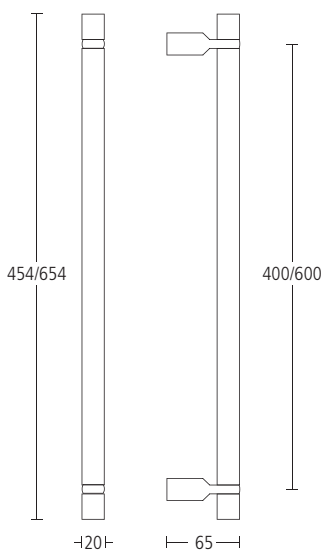
Pair, as above, with back-to-back fixings.

1629

Sembla pull handle as 1628 but with 600mm centres.

1629BB

Pair, as above, with back-to-back fixings.



1648

Sembla pull handle with bullet tips and bolt through fixings. 400mm centres.

Finishes: ST • SP • MA

Grips: KT • LT • DT • ST • LE

Note: Bullet tips supplied plain

1648BB

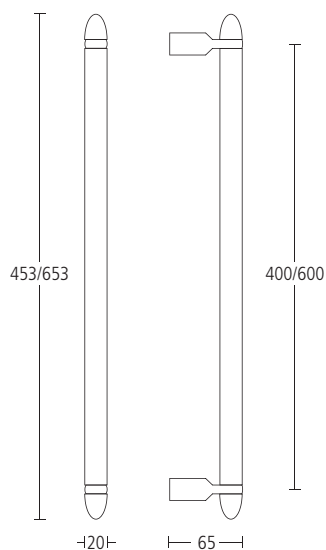
Pair, as above with back-to-back fixings.

1649

Sembla pull handle as 1648 but with 600mm centres.

1649BB

Pair, as above, with back-to-back fixings.





1638

Sembla pull handle with straight tips and bolt through fixings. 400mm centres.

Finishes: ST • SP • MA

Grips: KT • LT • DT • ST • LE

1638BB

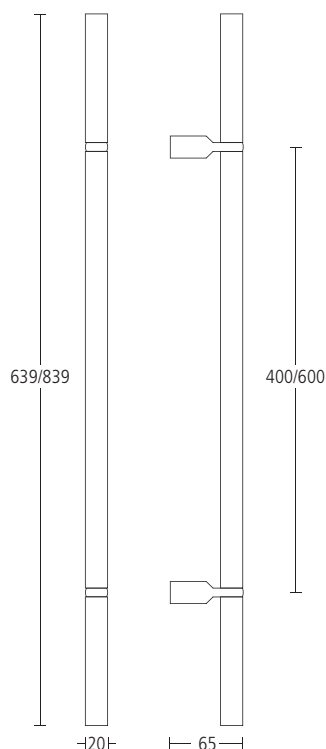
Pair, as above, with back-to-back fixings.

1639

Sembla pull handle as 1638 but with 600mm centres.

1639BB

Pair, as above, with back-to-back fixings.



1668

Sembla pull handle with crescent tips and bolt through fixings. 400mm centres.

Finishes: ST • SP • MA

Grips: ST

1668BB

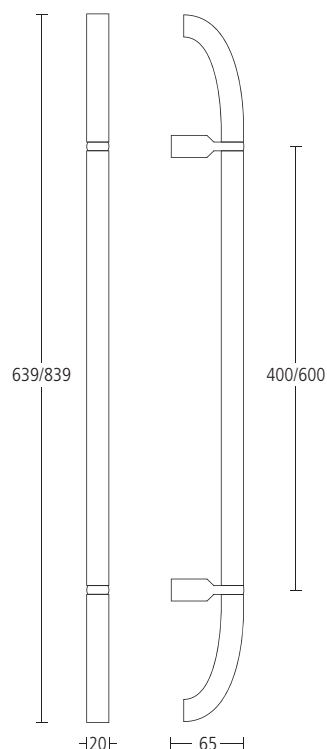
Pair, as above, with back-to-back fixings.

1669

Sembla pull handle as 1668 but with 600mm centres

1669BB

Pair, as above, with back-to-back fixings.





1729

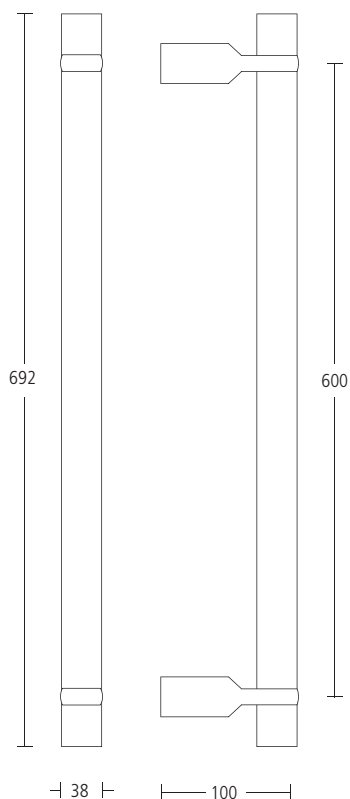
Sembla entrance pull handle with drum tips and bolt through fixings. 600mm centres.

Finishes: ST • SP • MA

Grips: LT • DT • ST • LE

1729BB

Pair, as above, with back-to-back fixings.



1729C

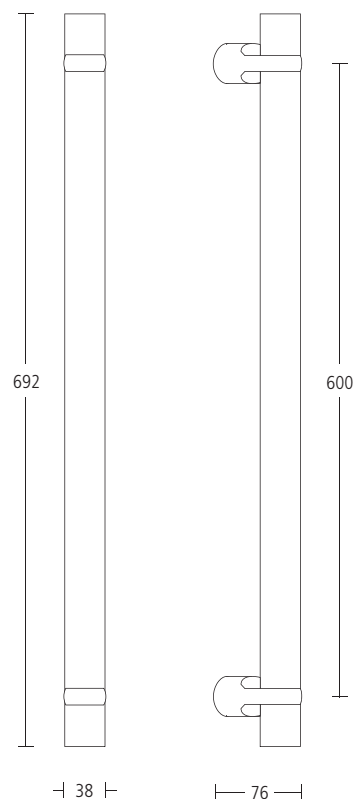
Sembla cranked entrance pull handle with drum tips and bolt through fixings. 600mm centres.

Finishes: ST • SP • MA

Grips: LT • DT • ST • LE

1729CBB

Pair, as above, with back-to-back fixings.



2. modric @ allgood



modric @ allgood

The Modric range of door furniture was conceived in 1965 on the basis of a dimensionally and aesthetically co-ordinated range of items to allow maximum interchangeability.

The principle of modular unsprung components was revolutionary and Modric soon became a design classic.

Through continuous development to the range, Modric today represents a timeless, clean-cut range of door furniture available in a number of metallic finishes. Products are hand finished to provide the very best quality available. Modric is known for fine design and extraordinary durability.



SS
Satin Stainless Steel.



PS
Polished Stainless Steel.



MA
Modric Anodised Aluminium.

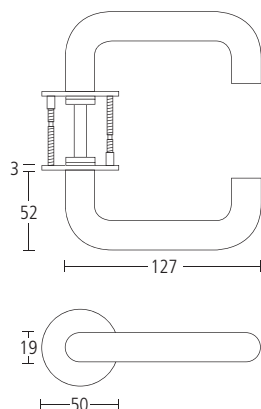
modric@allgood



3502

Modric lever handles on concealed Quadaxial fixing roses.

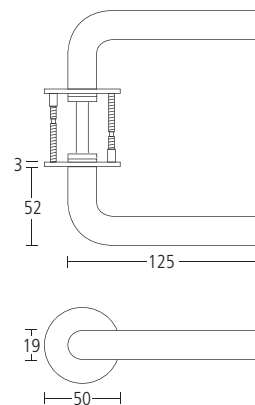
Finishes: SS • PS • MA



3503

Modric lever handles on concealed Quadaxial fixing roses.

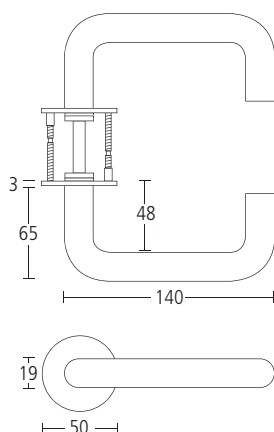
Finishes: SS • PS • MA



3502D

As above but with extra projection from the door.

Finishes: SS • PS • MA



The unique feature of Allgood lever handles is the Quadaxial rose assembly. This provides a corrosion resistant, maintenance free solution.

All Modric lever sets have independent test evidence to BS EN 1906, classification

47-1140U

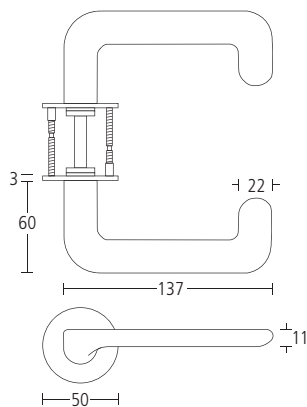
Lever handles



3504

Modric lever handles on concealed Quadaxial fixing roses.

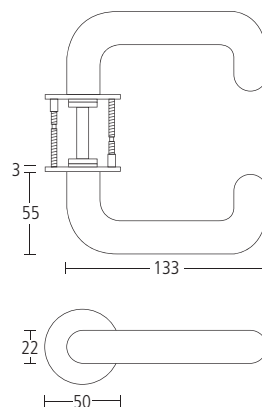
Finishes: SS • PS • MA



3506

Modric lever handles on concealed Quadaxial fixing roses.

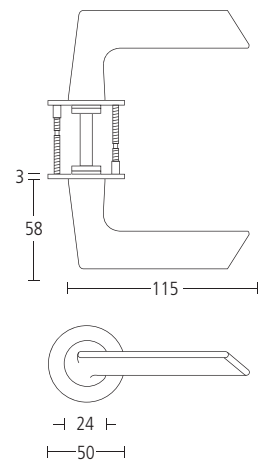
Finishes: SS • PS • MA



3515

Modric lever handles on concealed Quadaxial fixing roses.

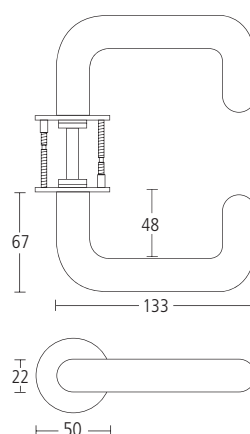
Finishes: SS • PS • MA



3506D

As above but with extra projection from the door.

Finishes: SS • PS • MA

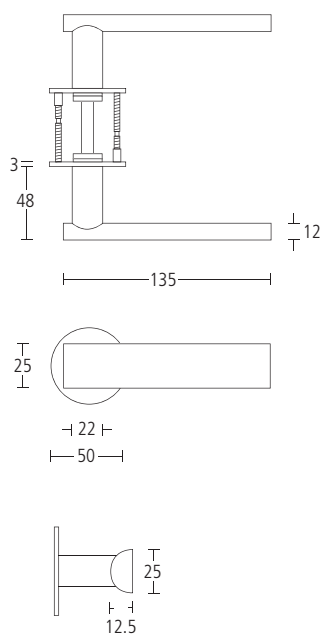




3520

Modric lever handles on concealed Quadaxial fixing roses.

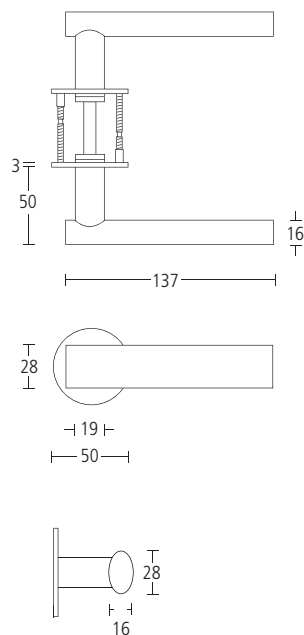
Finishes: SS • PS



3530

Modric lever handles on concealed Quadaxial fixing roses.

Finishes: SS • PS



The unique feature of Allgood lever handles is the Quadaxial rose assembly. This provides a corrosion resistant, maintenance free solution.

All Modric lever sets have independent test evidence to BS EN 1906, classification

47-1140U

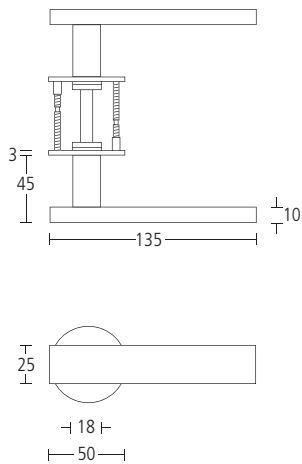
Lever handles



3540

Modric lever handles on concealed Quadaxial fixing roses.

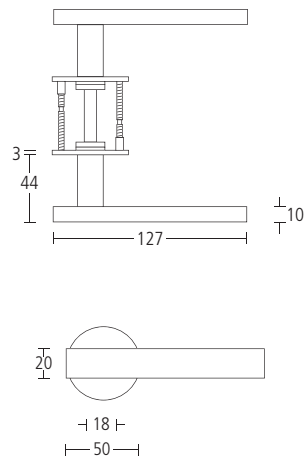
Finishes: SS • PS



3545

Modric lever handles on concealed Quadaxial fixing roses.

Finishes: SS • PS



modric@allgood

The unique feature of Allgood lever handles is the Quadaxial rose assembly. This provides a corrosion resistant, maintenance free solution.

All Modric lever sets have independent test evidence to BS EN 1906, classification

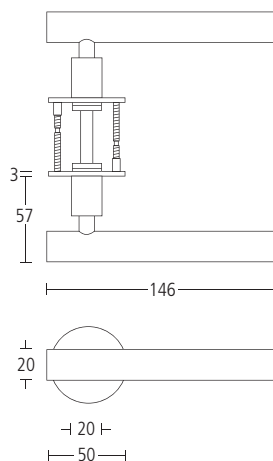
47-1140U



3550

Modric lever handles on concealed Quadaxial fixing roses.

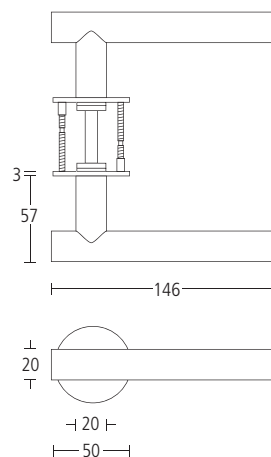
Finishes: SS • PS



3560

Modric lever handles on concealed Quadaxial fixing roses.

Finishes: SS • PS

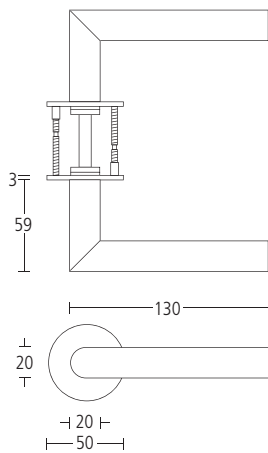




3570

Modric lever handles on concealed Quadaxial fixing roses.

Finishes: SS • PS



1. signature collection



signature collection

Our signature collection has been created from selecting the very best of Allgood's core products and enhanced to enable designers to create individual styles to complement their design concepts.

Opposite are the finishes in which the signature collection is available, providing a wide choice of aesthetic options. To select the product in the finish that you require, just add the finish prefix to the part number of the item.



ST
Satin Stainless Steel (316).
(SS on Modric items)



SP
Polished Stainless Steel (316).
(PS on Modric items)

Finishes



GT
PVD Gold on Polished Stainless Steel (316).



BT
PVD Bronze on Satin Stainless Steel (316).



MA
Modric Anodised Aluminium.

signature collection

At the heart of the signature collection is the Sembla range. The main design principle of Sembla is the central node; the component which makes the physical connection to the door.

Opposite we outline some of the bespoke grip and tip finishes that you can add to the semba node, providing a whole host of permutations in aesthetic design.

Add one of the following Sembla suffixes to a standard Sembla lever handle, to change the grip and tip combination.

For example:

SP3623DT = Pair of Sembla lever handles with Polished Stainless Steel node and Dark Wood grip and tip.



KT

Knurled Satin Stainless Steel grip and tip.



KP

Knurled Polished Stainless Steel grip and tip.



LT

Light Wood grip and tip.

Sourced from a FSC (Forest Stewardship Council) sustainable approved source, Light Wood grips are made from beech timber.



DT

Dark Wood grip and tip.

Sourced from a FSC (Forest Stewardship Council) sustainable approved source, Dark Wood grips are made from beech timber with a rich mahogany stain.



KG

Knurled PVD Gold grip and tip.



KB

Knurled PVD Bronze grip and tip.



ST

Soft Touch grip and tip.

Soft Touch Sembla is a polyurethane based black coating with excellent durability. The finish gives the visual effect of low gloss with a soft feel, providing a tactile gripping experience.

Alternative colours available on request.



LE

Leather grip and tip.

Leather Sembla can provide an interior with a continuation of a soft furnishing theme and provide a warm and luxurious grip.

signature collection

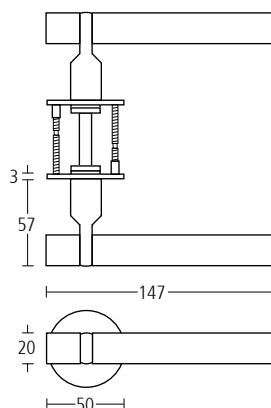


3623

Sembla lever handles with straight grip and drum tips on concealed Quadaxial fixing roses.

Finishes: ST • SP • GT • BT • MA

Grips: KT • KP • KG • KB • LT • DT • ST • LE



3623H

To suit hotel locking systems.



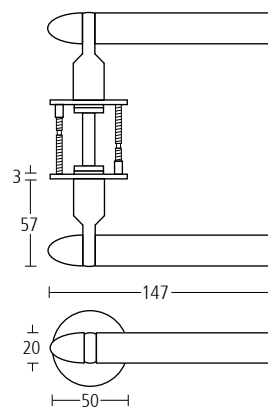
3643

Sembla lever handles with straight grip and bullet tips on concealed Quadaxial fixing roses.

Finishes: ST • SP • GT • BT • MA

Grips: KT • KP • KG • KB • LT • DT • ST • LE

Note: Bullet tips supplied plain



3643H

To suit hotel locking systems.

All signature collection lever sets have independent test evidence to BS EN 1906, classification **47-1140U**

When using signature collection lever handles as half sets on interconnecting doors, please add 1No XX9052NT spindle.

Lever handles

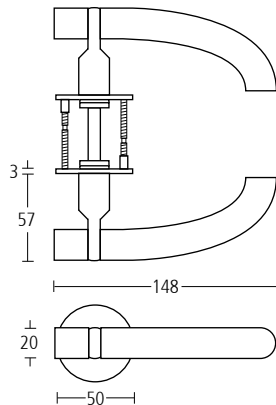


3626

Sembla lever handles with crescent grip and drum tips on concealed Quadaxial fixing roses.

Finishes: ST • SP • GT • BT • MA

Grips: ST



3626H

To suit hotel locking systems.



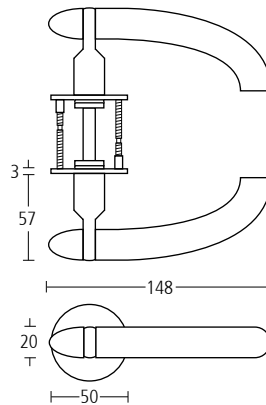
3646

Sembla lever handles with crescent grip and bullet tips on concealed Quadaxial fixing roses.

Finishes: ST • SP • GT • BT • MA

Grips: ST

Note: Bullet tips supplied plain



3646H

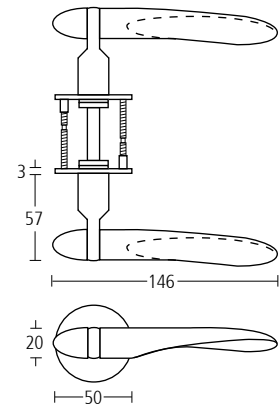
To suit hotel locking systems.



3640

Sembla lever handles with propeller grip and bullet tips on concealed Quadaxial fixing roses.

Finishes: ST • SP • GT • BT



3640H

To suit hotel locking systems.

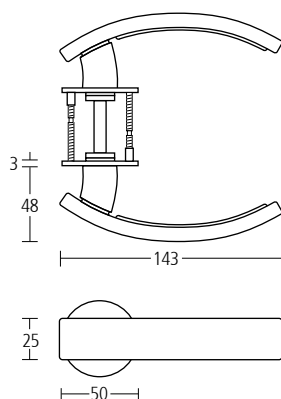
signature collection



3537

Modric lever handles with ceramic arc grip on concealed Quadaxial fixing roses.

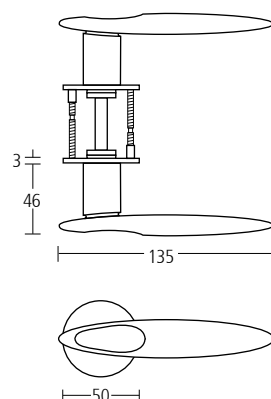
Finishes: SS • PS • GT • BT



3538

Modric lever handles with ceramic ellipse grip on concealed Quadaxial fixing roses.

Finishes: SS • PS • GT • BT



All signature collection lever sets have independent test evidence to BS EN 1906, classification **47-1140U**

When using signature collection lever handles as half sets on interconnecting doors, please add 1No XX9052NT spindle.

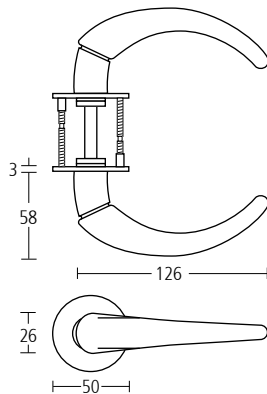
Lever and knob handles



3539

Modric lever handles with ceramic cast cornu grip on concealed Quadaxial fixing roses.

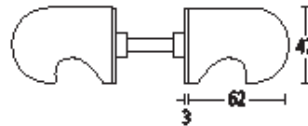
Finishes: SS • PS • GT • BT



2500/750

Modric knob handles with roses.

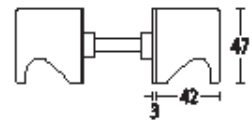
Finishes: SS • PS • GT • BT • MA



2505/750

Modric knob handles with roses.

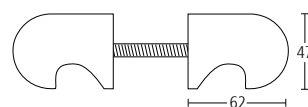
Finishes: SS • PS • GT • BT • MA



2510

Modric fixed knob handles for use in pairs on glass and timber doors, and singly on timber doors.

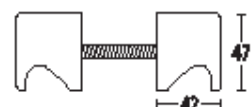
Finishes: SS • PS • GT • BT • MA



2511

Modric fixed knob handles for use in pairs on glass and timber doors, and singly on timber doors.

Finishes: SS • PS • GT • BT • MA



2. **classic** collection



classic collection



BB
Brown Brass.



PB
Polished Brass.

All classic collection lever sets have independent test evidence to BS EN 1906, classification **47-1140U**

When using classic collection lever handles as half sets on interconnecting doors, please add 1No XX40115 spindle.

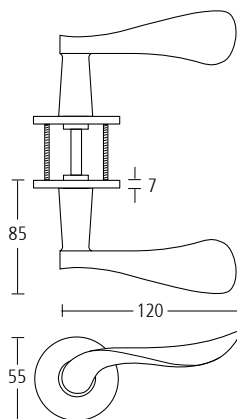
Finish and lever handles



41020F

Classic collection lever handles with concealed fixing roses.

Finishes: BB • PB



41020H

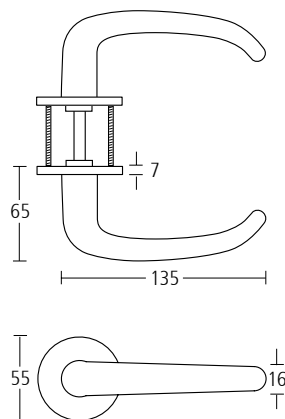
To suit hotel locking systems.



41023F

Classic collection lever handles with concealed fixing roses.

Finishes: BB • PB



41023H

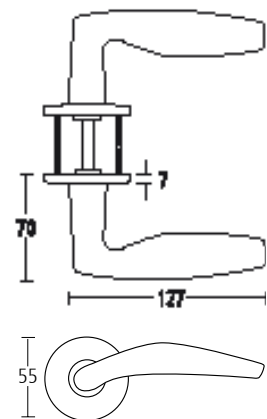
To suit hotel locking systems.



41057F

Classic collection lever handles with concealed fixing roses.

Finishes: BB • PB



41057H

To suit hotel locking systems.

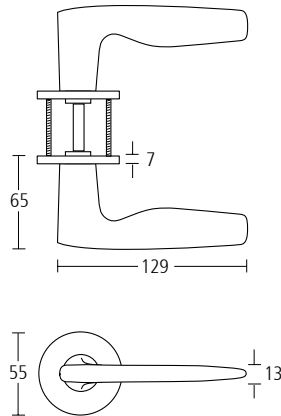
classic collection



41058F

Classic collection lever handles with concealed fixing roses.

Finishes: BB • PB



41058H

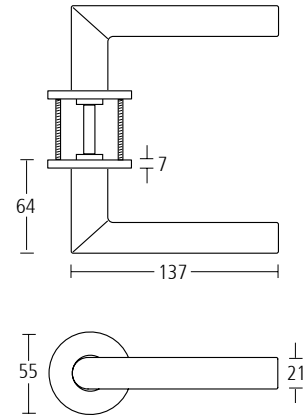
To suit hotel locking systems.



41076F

Classic collection lever handles with concealed fixing roses.

Finishes: BB • PB



41076H

To suit hotel locking systems.

All classic collection lever sets have independent test evidence to BS EN 1906, classification **47-1140U**

When using classic collection lever handles as half sets on interconnecting doors, please add 1No XX40115 spindle.



3. modern collection

Finishes	28
Lever handles	29-34
Escutcheons and W/C turns	35

modern collection



SS
Satin Stainless Steel.



PS
Polished Stainless Steel.

The modern collection provides a wide array of contemporary designs to suit every aesthetic requirement. Available in both Satin and Polished Stainless Steel.

When using modern collection lever handles as half sets on interconnecting doors, please add 1No XX9052NT spindle.

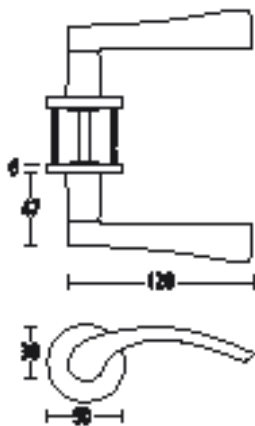
Finishes and lever handles



5200

Modern collection lever handles with concealed fixing roses.

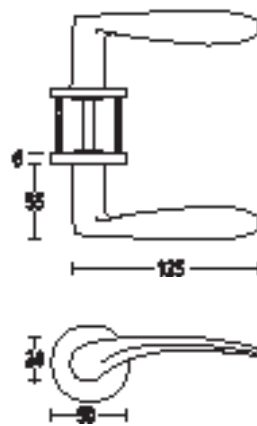
Finishes: SS • PS



5201

Modern collection lever handles with concealed fixing roses.

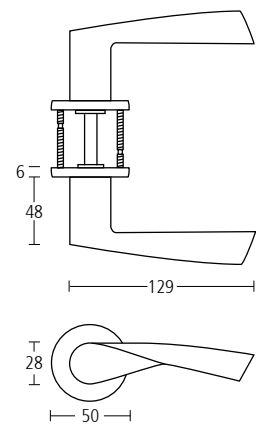
Finishes: SS • PS



5202

Modern collection lever handles with concealed fixing roses.

Finishes: SS • PS



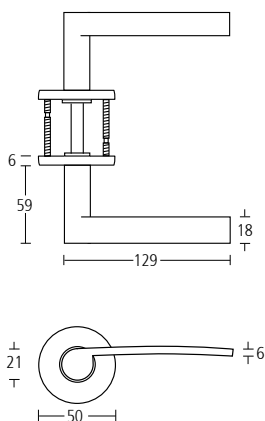
modern collection



5203

Modern collection lever handles with concealed fixing roses.

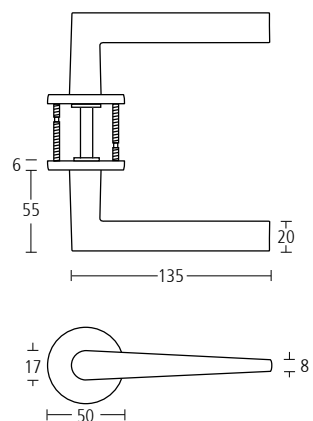
Finishes: SS • PS



5204

Modern collection lever handles with concealed fixing roses.

Finishes: SS • PS



When using modern collection lever handles as half sets on interconnecting doors, please add 1No XX9052NT spindle.

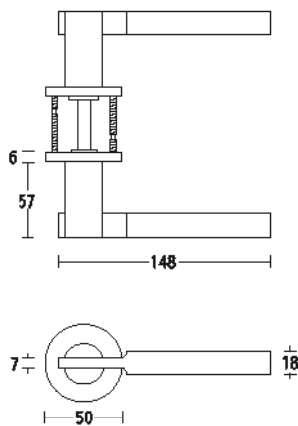
Lever handles



5205

Modern collection lever handles with concealed fixing roses.

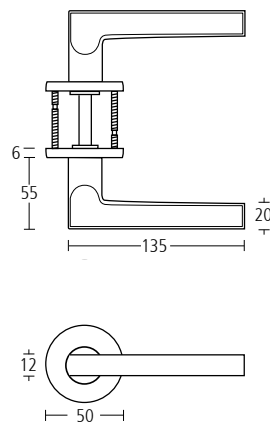
Finishes: SS • PS



5206

Modern collection lever handles with concealed fixing roses.

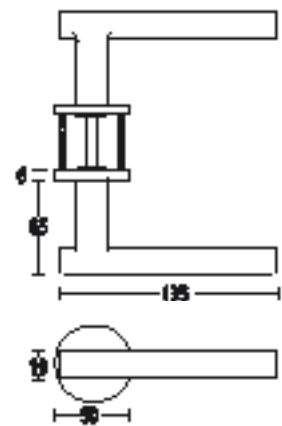
Finishes: SS • PS



5207

Modern collection lever handles with concealed fixing roses.

Finishes: SS • PS



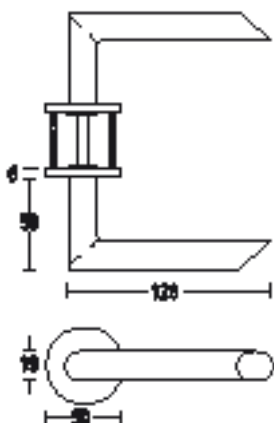
modern collection



5208

Modern collection lever handles with concealed fixing roses.

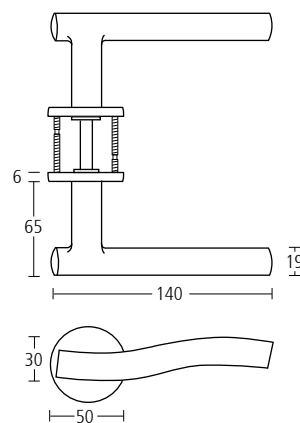
Finishes: SS • PS



5209

Modern collection lever handles with concealed fixing roses.

Finishes: SS • PS



When using modern collection lever handles as half sets on interconnecting doors, please add 1No XX9052NT spindle.

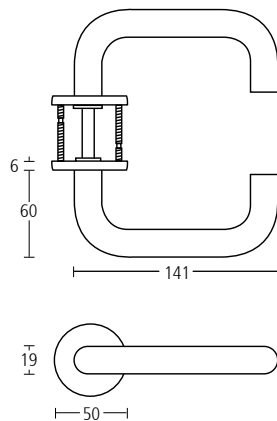
Lever handles



5210

Modern collection lever handles with concealed fixing roses.

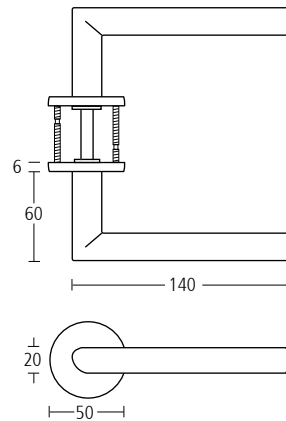
Finishes: SS • PS



5211

Modern collection lever handles with concealed fixing roses.

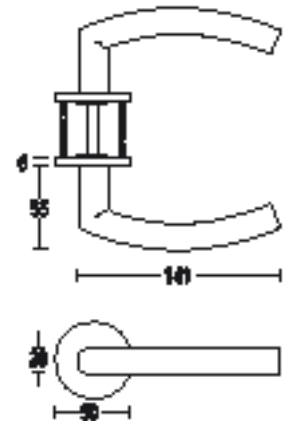
Finishes: SS • PS



5212

Modern collection lever handles with concealed fixing roses.

Finishes: SS • PS



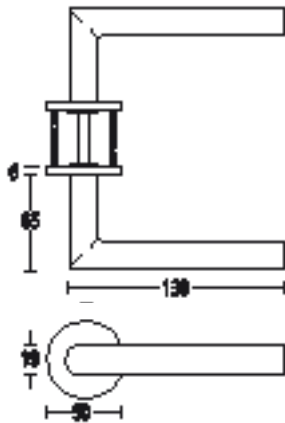
modern collection



5213

Modern collection lever handles with concealed fixing roses.

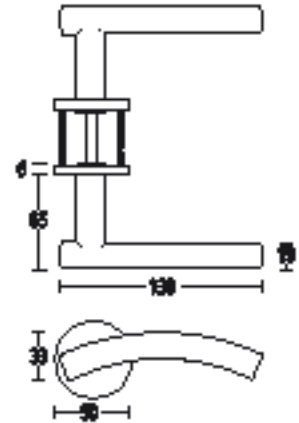
Finishes: SS • PS



5214

Modern collection lever handles with concealed fixing roses.

Finishes: SS • PS



When using modern collection lever handles as half sets on interconnecting doors, please add 1No XX9052NT spindle.

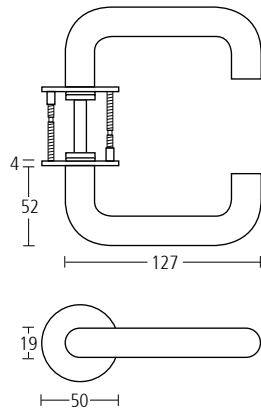
door furniture



97422

Alite safety lever handles on concealed Quadaxial fixing roses.

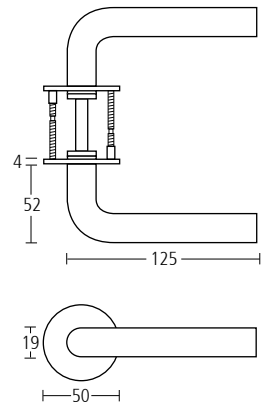
Finishes: SS (XX97422SS)
SA (XX97422SA)



97423

Alite lever handles on concealed Quadaxial fixing roses.

Finishes: SS (XX97423SS)
SA (XX97423SA)





overseas projects

Allgood Worldwide

297 Euston Road
London NW1 3AQ
Telephone: +44 (0)20 7255 9330
Facsimile: +44 (0)20 7383 7950
E-mail: info@allgoodww.com
Website: www.allgoodww.com

uk projects

Allgood plc

297 Euston Road
London NW1 3AQ
Telephone: 020 7387 9951
Facsimile: 020 7380 1232
E-mail: info@allgood.co.uk
Website: www.allgood.co.uk

63-83 Brearley Street
Birmingham B19 3NT
Telephone: 0121 359 4415
Facsimile: 0121 359 5832
E-mail: info@allgood.co.uk
Website: www.allgood.co.uk

28 Queen Street
Manchester M2 5HX
Telephone: 0161 834 6717
Facsimile: 0161 834 6839
E-mail: info@allgood.co.uk
Website: www.allgood.co.uk

The Wright Business Centre
1 Lonmay Road, Glasgow G33 4EL
Telephone: 0141 773 6298
Facsimile: 0141 771 9569
E-mail: info@allgood.co.uk
Website: www.allgood.co.uk